

# Haiken

Introducing

# The Beach Hut

The new pod from Haiken



[Haiken.com](https://www.haiken.com)

+44 (0) 203 873 1057  
[sales@haiken.com](mailto:sales@haiken.com)

121-131 Rosebery Avenue,  
Clerkenwell, London, EC1R 4RF

# Personal Focus Space

Optimised for reading, working, studying or hobbies.

**Be focused.**



Environments characterized by chaos and interruptions often lack focus, leading to diminished productivity and creativity.

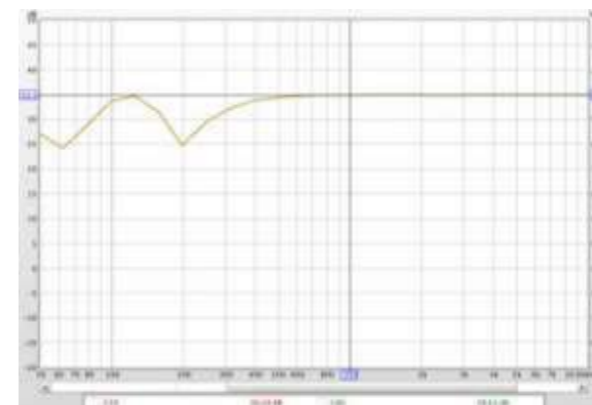
A dedicated space for focus, offering a serene and comfortable environment, tackles these issues efficiently.

STC 25dB ( $\pm 3$ dB)  
& RTO.25s ( $\pm 0.1$ s)

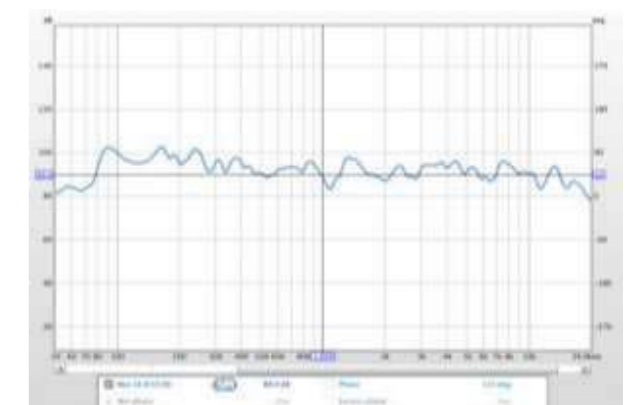
## Acoustic Index

Maintaining a quiet environment that is made for concentration, learning, thinking and reading is vital for progress in stressful situations.

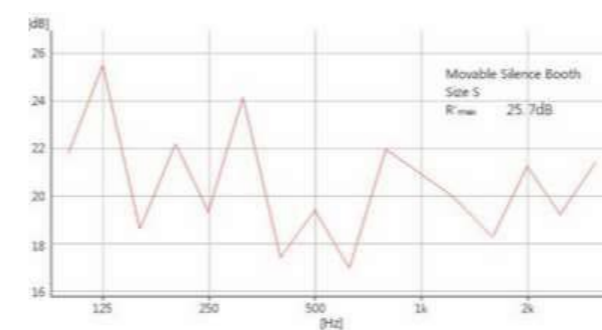
Speech Intelligibility



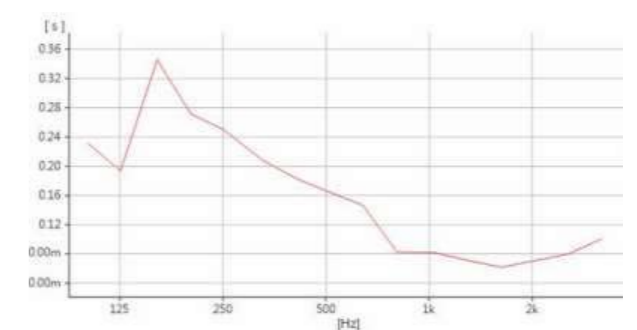
Frequency Response



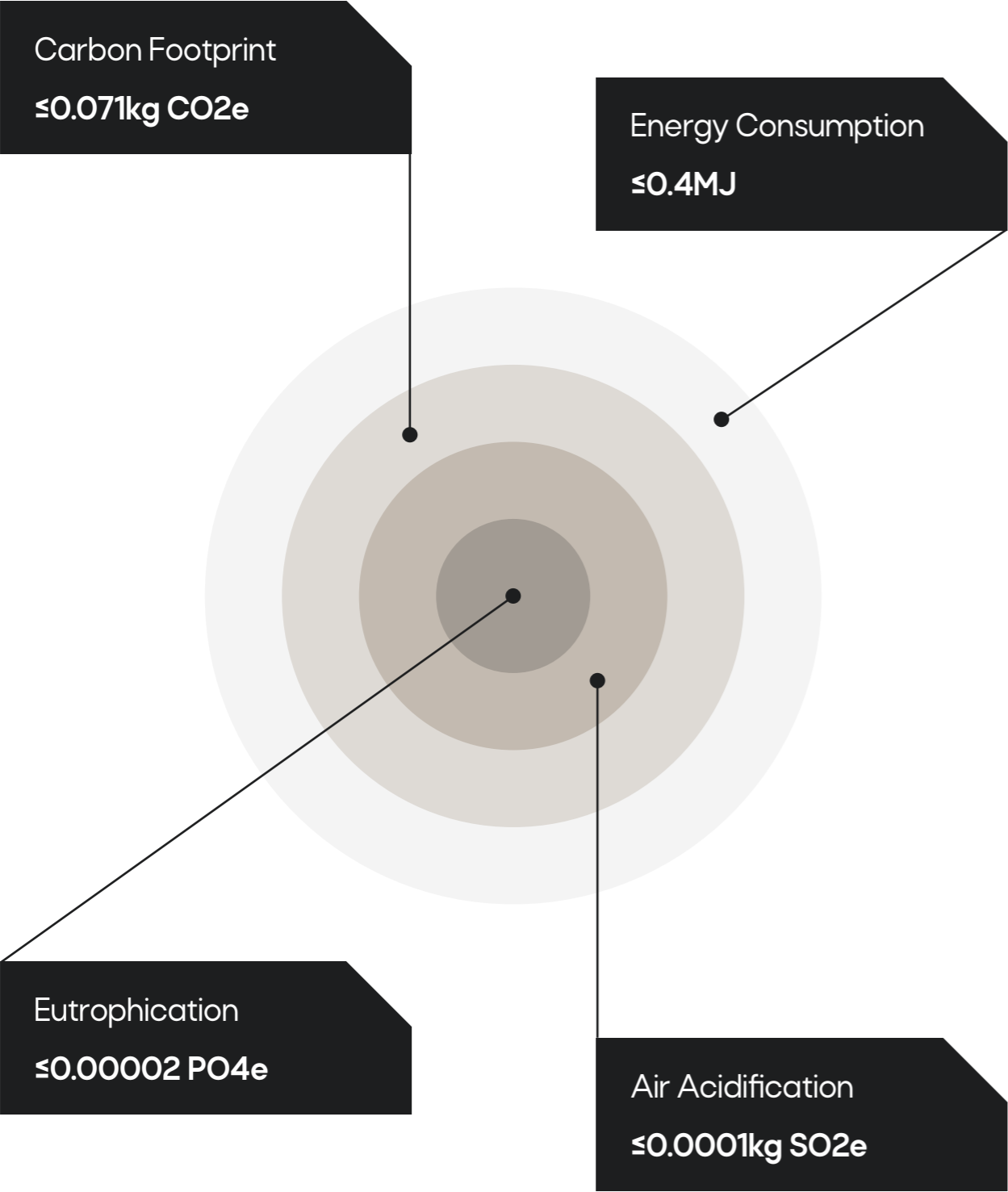
Reverberation Time Test



Sound Insulation Test



# Environmentally Friendly



# Flexibility

The Beach Hut Pod can be easily relocated within minutes.

By adjusting the levelling legs, the castors can seamlessly take over and transport The Beach Hut Pod to any desired location.

The castors are attached securely to the steel base panel, capable of supporting up to 100kg.

# Easy to Install

Every aspect is taken into account with The Beach Hut Pod, including top notch acoustic technology, versatility, and safety features.

Each element is carefully thought out to enhance the looks of your environment.

In addition, the assembly process can be finished within just 30 minutes.



Focus wherever you desire

# Pod Furniture

Equipped with all the essentials, including a soft couch, sturdy tabletop, bright LED lamp, powerful power socket, and built in ventilation, The Beach Hut Pod contains everything you need.

The PIR motion sensor is designed to conserve energy by automatically shutting off when no movement is detected for 5 minutes.

**Ariel view**



**Door handle**



**LED light & tabletop**



**Ventilation system**





# Finishing & Specifications

## External Finish

6063 T5 aviation aluminum door frame; Overall cladding technology sound insulation cloth; Supported by 15 + 15mm carbon polymer panels and a steel frame at the bottom, equipped with movable casters.

## Interior Finish

9mm thick polyester fiber sound absorption panel + wrap technology acoustic fabric.

## Specification size

[External] W1100\*D900\*H2100MM

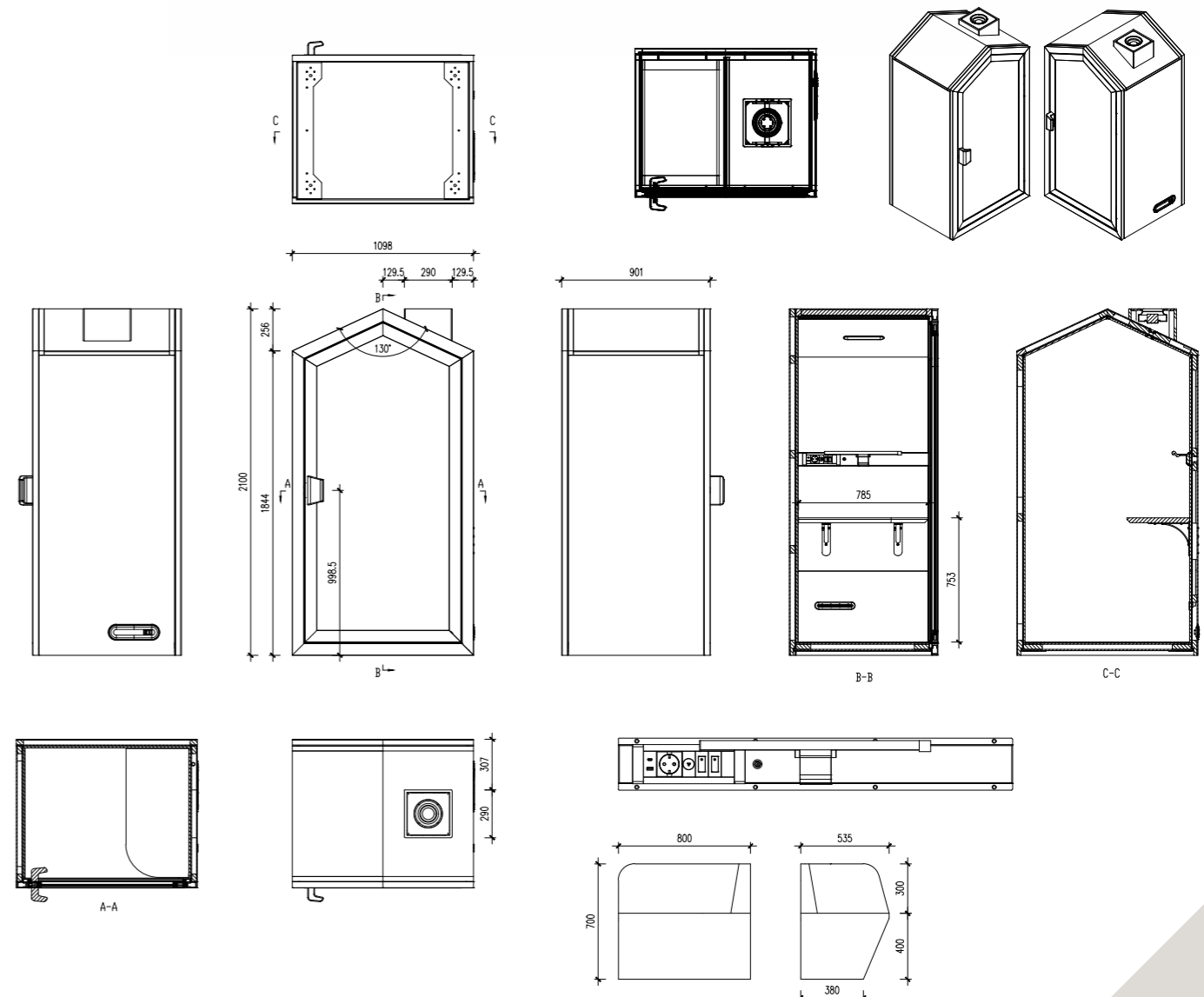
[Internal] W990\*D800\*H1950MM

[Weight] 200KG

[Weight capacity] 100KG

## Made of 3 types of boards:

5mm carbon polymer panels on both sides and the back, 30mm honeycomb panels on the top.



# Features

## Lighting

4000K (150Lx) Daylight LED lighting brightness adjustable.

## Floor

Full pavement technology sound-absorbing carpet.

## Door

6063-T5 aviation aluminium frame, 3mm + 3mm super white laminated acoustic glass.

## Desk

Multi-layer solid wood board desktop (desktop height can adjust 700 to 750mm from the base panel), desktop size W760\*380\*30mm.



## Hinges

Concealed heavy-duty hinges.

## Ventilation volume

30m<sup>3</sup> of fresh air circulated every hour, equipped with Turbo fresh air system.

## Motion sensor

Infrared human body sensor, powers off after 5 minutes of inactivity.

## Power socket

The number of sockets in The Beach Hut Pod can meet daily usage needs (five sockets with USB).

# Colour Options

Using **Morandi colours** ensures a smooth and stylish transition of The Beach Hut Pod into various types of



Stone



Wave



Sand



**Haiken.com**

+44 (0) 203 873 1057  
sales@haiken.com

121-131 Rosebery Avenue,  
Clerkenwell, London, EC1R 4RF

# Haiken

# The Beach Hut

Discover The Beach  
Hut Pod from Haiken



[Haiken.com](https://www.haiken.com)

+44 (0) 203 873 1057  
[sales@haiken.com](mailto:sales@haiken.com)

121-131 Rosebery Avenue,  
Clerkenwell, London, EC1R 4RF